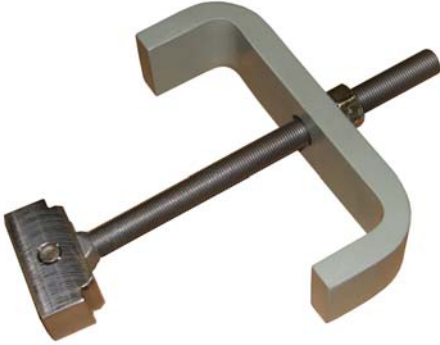


T11921

Turbocharger Bearing Puller - GE FDL Engines



T11971

Turbocharger Bearing Installation Tool - GE FDL Engines



T15240

BCO Turbocharger Core Plug Spanner Wrench (3/4" Hole Spacing x 1-1/8" Male Hex)



Spanner Wrench for BCO Turbocharger Core Plugs with 3/4" hole spacing. It is equipped with a 1 1/8" male hex to drive the wrench.

T15250

BCO Turbocharger Core Plug Spanner Wrench (1-1/2" Hole Spacing x 1-1/8" Male Hex)



Spanner Wrench for BCO Turbocharger Core Plugs with 1 1/2" hole spacing. It is equipped with a 1 1/8" male hex to drive the wrench.

T19164

Turbocharger Lifter for GE FDL Engines



This lifter is designed to remove and install all turbochargers on GE Engines. A turnbuckle is provided to assist leveling the turbocharger.

T20720

Bearing Puller for GE 1616 Turbochargers



T20750

Puller Assembly for GE FDL Turbocharger Compressor Wheel



T20770

Rotor Stud Cap for GE FDL Turbocharger



T20780

Guide Sleeve for GE 1616 Turbocharger Assembly/Disassembly



T22270

Turbocharger Impeller Bearing Puller - GE FDL Engines



T22552

Turbocharger Service Cart for GE FDL - 230 Volt



This cart was developed to aid the disassembly and assembly of GE Turbochargers. The turbocharger is mounted in the cage and secured with four hold down bolts. The cage is powered by an electric motor and gear that turns 360 degrees in either direction. The motor is operated by a push button and when released a mechanical brake locks the cage in place. Please specify a 115 Volt 50/60Cy 1 Phase unit or a 230V 50/60Cy 1 Phase unit.

T23502

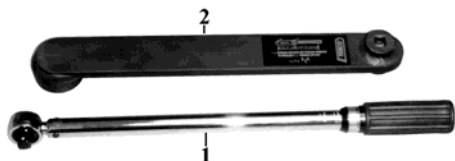
Turbocharger Mounting Bolt Removal Wrench 1 1/2" 12 Pt. - 26 Inches Long



T23520

Turbocharger Mounting Bolt Torque Kit for GE FDL Engines

All turbocharger mounting bolts on GE Engines require torquing per the maintenance instructions. This kit provides the tools for that practice.



- 1 [T22520](#) 1/2" sq. drive ratcheting head 30-150 lb. Ft. torque wrench
- 2 [T23500](#) Adapter

T50370

Turbocharger Transition Section to Exhaust Inlet Casing Wrench, 1/2" Square drive, 3/8" Hex - GE FDL Engines

